

Bankruptcy and Insolvency Services

SLBiggs is among the select few accounting firms to have earned a reputation as top professionals in the specialized areas of bankruptcy and insolvency services.

SLBiggs is one of the leading professional services firms with recognized expertise in bankruptcy and insolvency matters. The firm has served trustees, attorneys, government agencies, financial institutions, debtors and others for over 40 years, providing the substantive and impactful results that have bolstered our reputation as prominent experts in this specialized field.

As a niche practice within a large firm, we are able to bring the highly responsive, industry-specific expertise that our clients expect and deserve, with the depth of talent and resources required to handle major, complex cases.

The unparalleled breadth of knowledge and experience of our professionals is born in the trenches of handling thousands of bankruptcy, litigation, and forensic accounting cases, each unique in complexity, challenges and players, with many of them being among the largest, most involved cases in the country.

Professional backgrounds include appointments as bankruptcy trustee for the Central District of California, federal and state court receiver, Examiner, Disbursing Agent, Chapter 11 Plan administrator, Subchapter V Trustee for Region 19 (Colorado and Wyoming), and various other fiduciary assignments.

Our professionals are credentialed in law, fraud examination, forensic accounting, business valuation, tax, and accounting.



A Division of SingerLewak

WWW.SINGERLEWAK.COM

- Tax Preparation and Consultation
- Forensic Accounting and Investigations
- DIP Management and
- Reorganizations and Liquidations
- Trustee Support Services
- Business Turnaround and Crisis Management
- Expert Testimony



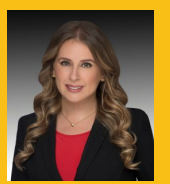
SAMUEL R. BIGGS,
PARTNER
sbiggs@slbiggs.com
310.314.8818



BRIAN LANDAU,
PARTNER
blandau@slbiggs.com
310.481.7419



MARK DENNIS,
PARTNER
mdennis@slbiggs.com
303.226.5471



JESSICA NADLER
SENIOR MANAGER
jnadler@slbiggs.com
424.320.3393